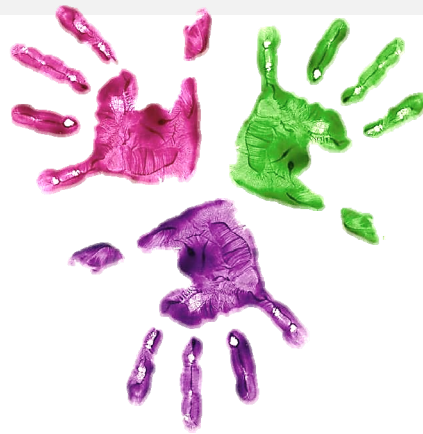


a report prepared for

# District CofE Primary School



Report run: 03/09/21

Policy, Performance & Business Intelligence Team  
Corporate Service

## Introduction

This report has been produced by St Helens Council and is designed to provide an initial overview on the predicted Key Stage outcomes completed by schools and voluntarily shared with the local authority in the 2020/2021 academic year. It is also intended that this report be used, by school leaders to analyse the information provided.

Primary school education is split into key stages as shown below

### Age of child related to year group and key stage

Year Group	R	1	2	3	4	5	6
Age of child at end of year	5	6	7	8	9	10	11
Key stage	EYFS	Key Stage 1		Key Stage 2			

## COVID Pandemic

Due to the impact of the COVID-19 pandemic, most exams and assessments did not take place in the 2019/20, or 2020/21 academic years. As such the 2021 national curriculum assessments, including key stage 1 and key stage 2 tests and teacher assessments, have been cancelled with Local authorities not required to undertake moderation activities.

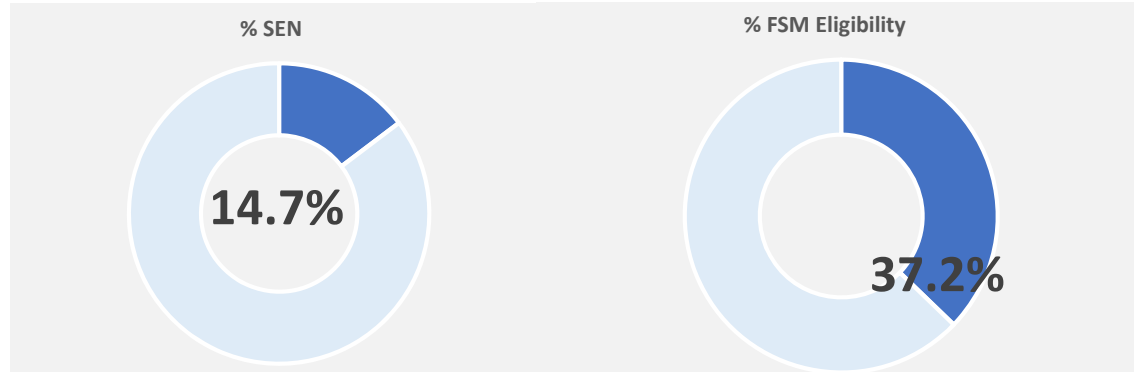
A number of schools locally generated predicted assessments across a number of the Key Stages and chose to voluntarily share some of this information with the local authority. The information reported for the 2020/21 period, within this booklet, is based on the predicted assessments completed by schools locally. It is important to note, given the cancellation of the national curriculum assessments, that the predicted assessments provided should not be viewed as validated end of key stage assessments and as such should be viewed with caution. Furthermore, the sharing of predicted assessment data with the LA was an entirely voluntary arrangement in which some schools did not choose to participate, as such, all LA level predicted assessment averages for 2020/21, displayed in this booklet, should be viewed with caution and on the basis that they based solely on the data of those schools that participated rather than all schools in St Helens.

# District CofE Primary School

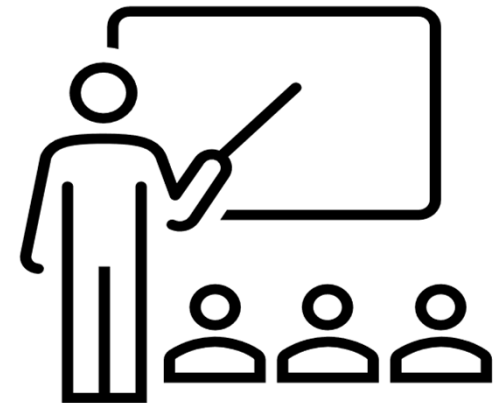
## Spring Term School Census

Schools and local authorities are required to provide the Department for Education (DfE) with a school census return (using a DfE-designed survey instrument) covering a wide range of information on the characteristics of schools and the pupils within them in January each year. For the school census return, all schools that were open on school census day, 17 January 2021, were required to submit a school census return via their local authorities

Number of pupils:	317	<b>School</b>	<b>England</b>
Number of boys	159	50.2%	50.9%
Number of girls	158	49.8%	49.1%
Pupils with SEN Support	55	17.4%	12.6%
Pupils with EHCP	1	0.3%	2.1%
Pupils eligible for FSM	118	37.2%	21.6%
Pupils with EAL	30	9.5%	20.9%



Year Group	Pupil Numbers	% SEN (EHCP & Support)	% Eligible for Free School Meals	% English as an Additional Language
NC Year N1	1	0%	0%	0%
NC Year N2	15	0%	0%	13%
NC Year R	45	0%	36%	7%
NC Year 1	33	15%	39%	6%
NC Year 2	49	12%	31%	6%
NC Year 3	32	25%	47%	3%
NC Year 4	42	21%	55%	19%
NC Year 5	47	32%	36%	13%
NC Year 6	53	25%	36%	9%



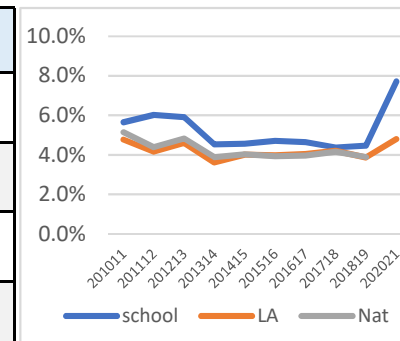
# District CofE Primary School

## Pupil attendance across the combined Autumn and Spring term period

This Statistics below report on absence in state-funded primary school during the autumn term and spring term. This data is collected via the termly school census. Two term absence figures are useful as they give an indication of the full year position at a much earlier time. Please note, that no data is available for the 2019/20 year given the COVID pandemic and the subsequent cancellation of the summer term School Census (May 2020). The information displayed for 2020/21 is provisional and potential subject to change and should be treated with caution, furthermore, all COVID related absences in the 2020/21 period are excluded from the absence statistic calculations. **For 2020/21, not attending in circumstances related to coronavirus (COVID-19) is not counted as an absence.** This includes pupils self-isolating and shielding, including when a class or bubble has been required to stay at home. During these sessions, pupils were expected to not attend or were prohibited from attending and so they are treated separately and not counted within the standard absence rates

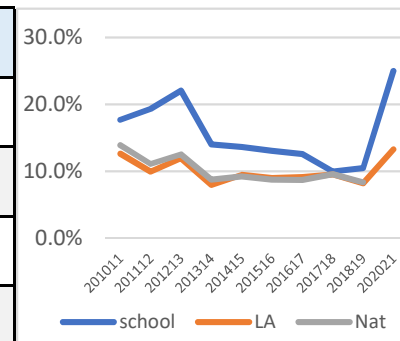
### Percentage of overall sessions missed due to absence

Focus	201011	201112	201213	201314	201415	201516	201617	201718	201819	201920	202021
School	5.7%	6.0%	5.9%	4.5%	4.6%	4.7%	4.7%	4.4%	4.5%		7.7%
St Helens	4.8%	4.2%	4.6%	3.6%	4.0%	4.0%	4.0%	4.2%	3.9%		4.8%
England	5.1%	4.4%	4.8%	3.9%	4.0%	3.9%	4.0%	4.2%	3.9%		



### Percentage of pupils persistently absent (10%+)

Focus	201011	201112	201213	201314	201415	201516	201617	201718	201819	201920	202021
School	17.7%	19.3%	22.1%	14.1%	13.6%	13.1%	12.6%	10.0%	10.5%		25.0%
St Helens	12.7%	9.9%	12.0%	8.0%	9.5%	9.0%	9.2%	9.6%	8.2%		13.3%
England	13.9%	11.1%	12.6%	8.8%	9.2%	8.8%	8.7%	9.6%	8.4%		



# District CofE Primary School

## Pupil attendance across the combined 2020/2021 academic year Autumn and Spring term period

The information displayed for 2020/21 is provisional and potential subject to change and should be treated with caution, furthermore, all COVID related absences in the 2020/21 period are excluded from the absence statistic calculations. For 2020/21, not attending in circumstances related to coronavirus (COVID-19) is not counted as an absence. This includes pupils self-isolating and shielding, including when a class or bubble has been required to stay at home. During these sessions, pupils were expected to not attend or were prohibited from attending and so they are treated separately and not counted within the standard absence rates

Pupil Group	Statistics exclude all COVID related absences							Number of sessions lost due to COVID (X)
	Sessions Possible	% Overall Absence	%Auth Absence	%Unauth Absence	Persist Absent Count	% Persist Absent		
All Pupils	53857	9.45%	1.90%	7.56%	66	25.00%	12127	
NC Year: 1	6898	8.38%	1.59%	6.78%	7	19.44%	1804	
NC Year: 2	10044	8.37%	1.76%	6.61%	13	26.53%	2456	
NC Year: 3	6579	9.82%	2.37%	7.45%	8	24.24%	1525	
NC Year: 4	8912	11.51%	1.72%	9.80%	12	28.57%	1770	
NC Year: 5	10108	10.37%	2.31%	8.06%	14	28.57%	2138	
NC Year: 6	11284	8.16%	1.43%	6.74%	11	20.37%	2432	
Gender: Female	25659	9.37%	2.16%	7.21%	29	22.83%	5755	
Gender: Male	28198	9.53%	1.66%	7.87%	37	27.01%	6372	
SEN Provision: EHC Plan	353	60.06%	15.30%	44.76%	1	50.00%	21	
SEN Provision: SEN Support	11558	14.63%	1.84%	12.79%	24	44.44%	1730	
SEN Provision: None	41914	7.53%	1.72%	5.81%	40	19.32%	10374	
FSM Eligible: False	32303	7.42%	1.43%	5.99%	29	18.13%	8219	
FSM Eligible: True	21554	12.51%	2.60%	9.91%	37	35.58%	3908	
Language: EAL	5155	9.82%	1.71%	8.11%	5	20.00%	1181	
Language: Not EAL	48702	9.42%	1.92%	7.50%	61	25.52%	10946	

# District CofE Primary School

## Early Years Foundation Stage Profile

A new Early Years Foundation Stage Profile (EYFSP) was introduced in September 2012. The new Profile made changes to the way children are assessed at the end of the EYFS (the end of academic year in which a child turns five). The new Profile requires practitioners to make a best-fit assessment of whether children are emerging, expected or exceeding against each of the new 17 Early Learning Goals (ELGs). The table directly below provides an overview for each of the past three academic years on the percentage of children who were judged to be working at or exceeding the expected standard in each area of learning within the EYFS.

Area of Learning	School			St Helens			England		
	EYFS		Predicted	EYFS		Predicted	EYFS		Predicted
	2018	2019	2021	2018	2019	2021	2018	2019	2021
Communication and Language	68%	81%	NA	79%	80%	63%	82%	82%	-
Physical Development	74%	91%	NA	86%	85%	70%	87%	87%	-
Personal, Social and Emotional Development	61%	87%	NA	82%	82%	69%	85%	85%	-
Literacy	55%	66%	NA	71%	72%	54%	73%	73%	-
Mathematics	65%	83%	NA	77%	77%	62%	78%	79%	-
Understanding the World	65%	94%	NA	81%	81%	65%	84%	84%	-
Expressive Arts and design	74%	91%	NA	84%	83%	67%	87%	87%	-

<b>% Pupils achieving a 'good level of development' at the end of the EYFS<sup>1</sup></b>	52%	64%	NA	69%	70%	50%	72%	72%	-
--	-----	-----	----	-----	-----	-----	-----	-----	---

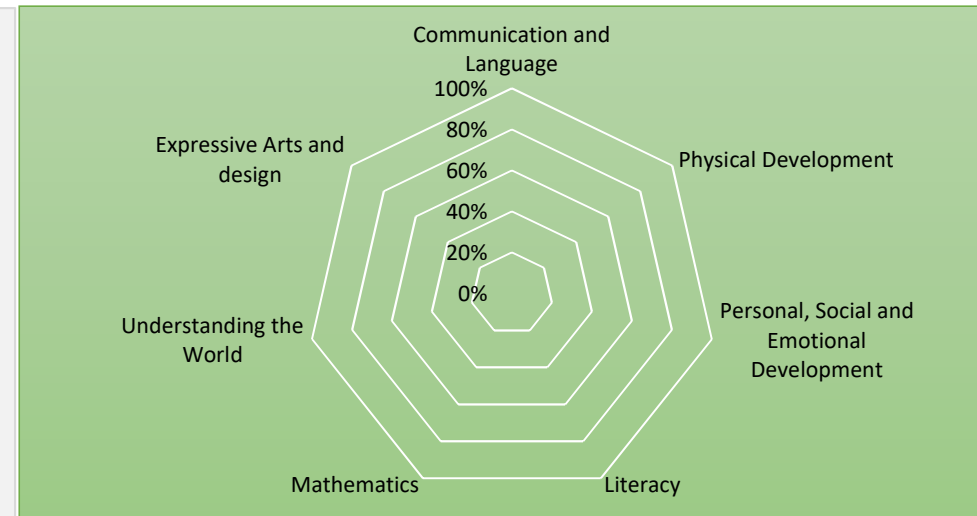
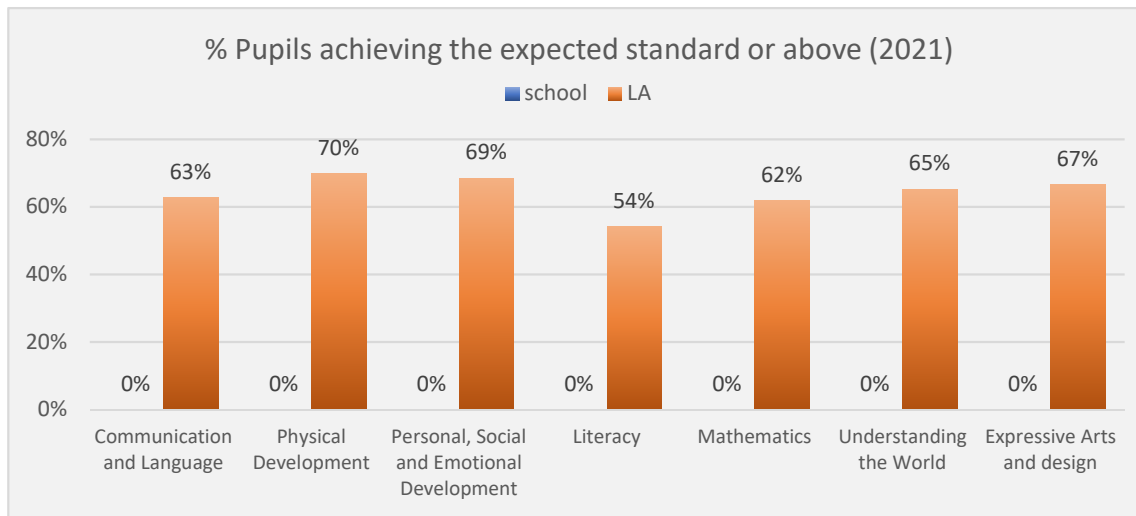
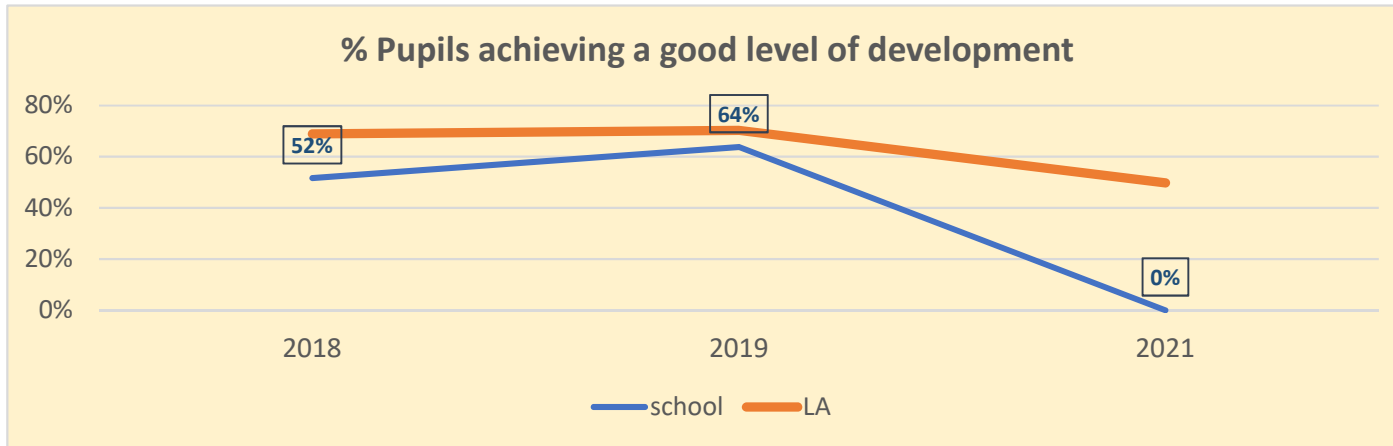
<sup>1</sup> In the EYFSP, children will be defined as having reached a Good Level of Development at the end of the EYFS if they achieve at least the expected level in the early learning goals in the prime areas of learning (personal, social and emotional development; physical development; and communication and language) and in the specific areas of mathematics and literacy

<b>Total EYFS Average Points Score per pupil<sup>2</sup></b>	30.6	34.6	NA	33.5	33.8	29.8	34.6	34.6	-
--	------	------	----	------	------	------	------	------	---

<sup>2</sup> The supporting measure takes into account performance across all 17 ELGs. Each child scores one point for an emerging ELG, two points for an expected and three points for an exceeding. For each child, the total point score is the sum of their score in each of the 17 ELGs, where the minimum score is 17 and the maximum score is 51. All children's scores are totalled and then averaged to create the measure.

# District CofE Primary School

## Early Years Foundation Stage Profile



# District CofE Primary School

## Early Years Foundation Stage Profile - 2020/2021 Summary by Pupil Characteristics

The table below provides a basic summary of the predicted Early Years Foundation Stage assessments provided by your school in 2021, showing the collective achievement for groups of children. All Local Authority (LA) averages are an aggregate of the predicted assessments provided by the primary schools in St Helens that voluntarily chose to share their predicted EYFS information with the LA and as such are not representative of all schools in St Helens.

Group	Number of Pupils	% Achieving a good level of development (Predicted)		Average EYFS Points Score per pupils (Predicted)			
		School	LA	School	LA		
All Pupils	-	-	-	49.1%	-	-	29.8
Boys	-	-	-	42.0%	-	-	28.6
Girls	-	-	-	57.8%	-	-	31.3
Disadvantaged	-	-	-	22.7%	-	-	25.9
Other Pupils	-	-	-	53.3%	-	-	30.4
No SEN	-	-	-	52.5%	-	-	30.5
SEN Support	-	-	-	15.1%	-	-	22.6
EHCP Plan	-	-	-	0.0%	-	-	17.3
EAL pupils	-	-	-	51.2%	-	-	28.9
non EAL pupils	-	-	-	48.9%	-	-	29.9





# District CofE Primary School

## Key Stage 1 Teacher Assessments (TA)

2016 was the first year of the new key stage 1 tests in maths and English reading. The test scores are used by teachers to inform their overall teacher assessment. This means that the test score a child is given may not be the result they achieved in their SATs, but a score based on SATs results, classwork and the teacher's observations. The table below provides an overview on the teacher assessments grades reported, specifically, the numbers of children achieving the age expected standard or above (EXS+) and also the numbers of children judged to be working at a greater depth within the expected standard (GDS). **The 2021 national curriculum assessments, including key stage 1 tests and teacher assessments, have been cancelled. The information presented for 2021 are predicted teacher assessments completed by the school and voluntarily shared with the local authority and should be treated with caution and not be seen as formal KS1 assessment outcomes.**

Percentage achieving the expected standard or above										
Subject	School			St Helens			England			
	KS1 TA		Predicted TA	KS1 TA		Predicted TA	KS1 TA		Predicted TA	
	2018	2019	2021	2018	2019	2021	2018	2019	2021	
Reading	65%	67%	-	73%	74%	66%	75%	75%	-	
Writing	63%	62%	-	69%	69%	58%	70%	69%	-	
Mathematics	65%	59%	-	75%	75%	67%	76%	76%	-	

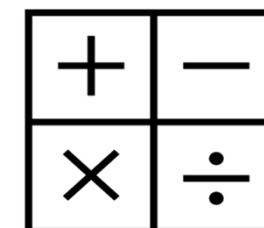
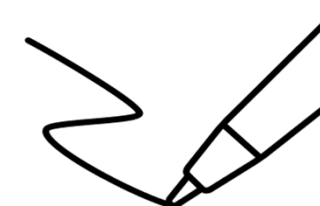
Percentage achieving greater depth										
Subject	School			St Helens			England			
	KS1 TA		Predicted TA	KS1 TA		Predicted TA	KS1 TA		Predicted TA	
	2018	2019	2021	2018	2019	2021	2018	2019	2021	
Reading	9%	15%	-	21%	21%	16%	26%	25%	-	
Writing	7%	8%	-	14%	12%	7%	16%	15%	-	
Mathematics	5%	10%	-	20%	19%	14%	22%	22%	-	

# District CofE Primary School

## Key Stage 1 Predicted Teacher Assessments - 2020/2021 Summary by Pupil Characteristics

The 2021 national curriculum assessments, including key stage 1 tests and teacher assessments, have been cancelled. The information presented for 2021 are predicted teacher assessments completed by the school and voluntarily shared with the local authority and should be treated with caution and not be seen as formal KS1 assessment outcomes. All Local Authority (LA) averages are an aggregate of the predicted teacher assessments provided by the primary schools in St Helens that voluntarily chose to share the information with the LA.

Percentage of pupils achieving the expected standard or above										
Group	Number of Pupils	Reading		Writing		Mathematics				
		School	LA	School	LA	School	LA			
All Pupils	-	-	-	65.5%	-	-	57.6%	-	-	67.2%
Boys	-	-	-	63.2%	-	-	53.2%	-	-	70.6%
Girls	-	-	-	67.6%	-	-	61.6%	-	-	64.1%
Disadvantaged	-	-	-	46.7%	-	-	40.9%	-	-	52.2%
Other Pupils	-	-	-	72.8%	-	-	64.0%	-	-	73.1%
No SEN	-	-	-	71.8%	-	-	64.2%	-	-	73.6%
SEN Support	-	-	-	31.8%	-	-	22.5%	-	-	34.6%
EHCP Plan	-	-	-	7.1%	-	-	0.0%	-	-	0.0%
EAL pupils	-	-	-	70.6%	-	-	70.6%	-	-	74.5%
non EAL pupils	-	-	-	65.2%	-	-	56.9%	-	-	66.8%



# District CofE Primary School

## Key Stage 2 Teacher Assessments (TA)

In 2016, the new more challenging national curriculum, which was introduced in 2014, was assessed by new tests and interim frameworks for teacher assessment. Results are no longer reported as levels: each pupil receives their test results as a scaled score and teacher assessments based on the standards in the interim framework. The expected standard in the tests is a scaled score of 100 or above. In addition, the Department for Education (DfE) have set the threshold for the higher standard in 2019 to be 110. **The 2021 national curriculum assessments, including key stage 2 tests and teacher assessments, have been cancelled. The information presented for 2021 are predicted teacher assessments completed by the school and voluntarily shared with the local authority and should be treated with caution and not be seen as formal KS2 assessment outcomes.**

Percentage achieving the expected standard or above									
Subject	School			St Helens			England		
	KS2 Test and TA		Predicted TA	KS2 Test and TA		Predicted TA	KS2 Test and TA		Predicted TA
	2018	2019	2021	2018	2019	2021	2018	2019	2021
Reading	68%	59%	-	75%	74%	78%	75%	73%	-
Writing	73%	71%	-	79%	80%	75%	78%	78%	-
Mathematics	63%	64%	-	74%	78%	74%	76%	79%	-
Reading, Writing & Mathematics	50%	50%	-	63%	66%	67%	64%	65%	-

Percentage achieving greater depth									
Subject	School			St Helens			England		
	KS2 Test and TA		Predicted TA	KS2 Test and TA		Predicted TA	KS2 Test and TA		Predicted TA
	2018	2019	2021	2018	2019	2021	2018	2019	2021
Reading	27%	18%	-	27%	27%	28%	28%	27%	-
Writing	11%	13%	-	21%	21%	15%	20%	20%	-
Mathematics	14%	18%	-	21%	27%	20%	24%	27%	-
Reading, Writing & Mathematics	7%	7%	-	9%	10%	11%	10%	11%	-

# District CofE Primary School

## Key Stage 2 Predicted Teacher Assessments - 2020/2021 Summary by Pupil Characteristics

The 2021 national curriculum assessments, including key stage 1 tests and teacher assessments, have been cancelled. The information presented for 2021 are predicted teacher assessments completed by the school and voluntarily shared with the local authority and should be treated with caution and not be seen as formal KS1 assessment outcomes. All Local Authority (LA) averages are an aggregate of the predicted teacher assessments provided by the primary schools in St Helens that voluntarily chose to share their information with the LA.

### Percentage of pupils achieving the expected standard or above

Group	Number of Pupils	Reading, Writing & Mathematics		Reading		Writing		Mathematics	
		School	LA	School	LA	School	LA	School	LA
All Pupils	-	-	67.0%	-	78.2%	-	74.5%	-	74.1%
Boys	-	-	64.1%	-	73.5%	-	67.6%	-	74.7%
Girls	-	-	69.8%	-	83.0%	-	81.3%	-	73.4%
Disadvantaged	-	-	48.2%	-	63.9%	-	59.7%	-	57.5%
Other Pupils	-	-	76.4%	-	85.5%	-	81.9%	-	82.4%
No SEN	-	-	79.4%	-	88.9%	-	86.7%	-	84.0%
SEN Support	-	-	31.1%	-	48.1%	-	39.3%	-	45.9%
EHCP Plan	-	-	20.6%	-	32.4%	-	26.5%	-	32.4%
EAL pupils	-	-	56.3%	-	66.7%	-	66.7%	-	66.7%
non EAL pupils	-	-	67.4%	-	78.7%	-	74.8%	-	74.4%